

eve light strip



Primeros pasos

Primeros pasos

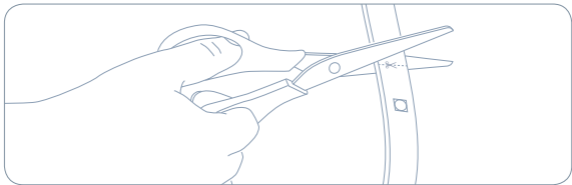


Se puede ajustar el largo de la Eve Light Strip para adaptarla a la aplicación que necesites. Para acortar la Eve Light Strip, usa unas tijeras y corta por una de las líneas de recorte indicadas (hay una más o menos cada 30 cm / 12 pulgadas).

Primeros pasos



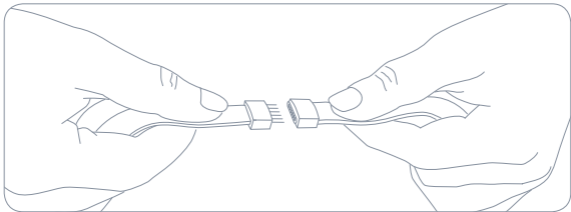
Recuerda desconectar la Eve Light Strip de la corriente antes de acortarla.



Alargar



Para alargar tu Eve Light Strip, solo tienes que conectarle otra tira. Se pueden encadenar varias tiras Eve Light Strip hasta un máximo de 10 m.



Alargar



Los elementos luminosos de este accesorio no son reemplazables. Cuando el elemento luminoso llega al final de su vida útil, se debe reemplazar toda la tira.



**For indoor
use only**

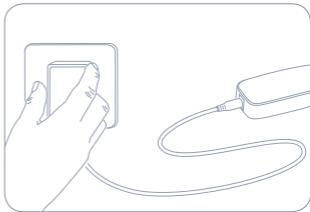
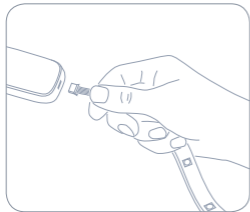


2,4 GHz
802.11 b,g,n

Primeros pasos

①

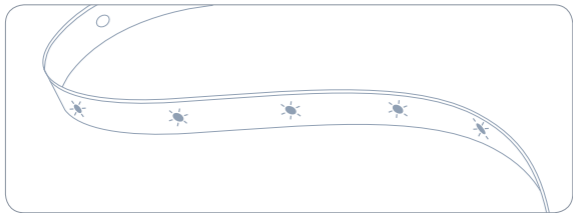
En primer lugar, conecta la Eve Light Strip al controlador. A continuación, conecta el controlador a la fuente de alimentación y conéctala a una toma de corriente.



Primeros pasos



Al encender la Eve Light Strip, realizará una prueba rápida pasando por cada color.



Primeros pasos

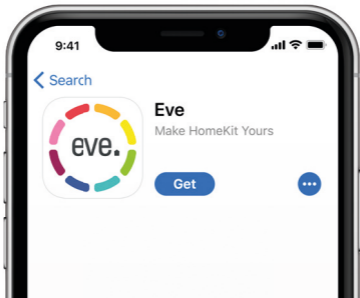
②

Descargue la app Eve desde el App Store.



🔍 Eve

Primeros pasos



Primeros pasos

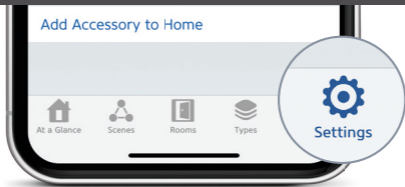
3



Add Accessory

Abra la app Eve y toque Añadir accesorio. Eve le guiará por el proceso de configuración.

Primeros pasos



Si ya ha configurado otro accesorio, vaya a los Ajustes de Eve para añadir Eve Light Strip a su casa.

Información legal

This device complies with part 15 of the FCC Rules and Industry Canada licence-exempt RSS standard(s). Operation is subject to the following two conditions: (1) This device may not cause interference, and (2) this device must accept any interference received, including interference that may cause undesired operation.

This equipment has been tested and found to comply with the limits for a Class B digital device, pursuant to part 15 of the FCC Rules. These limits are designed to provide reasonable protection against harmful interference in a residential installation. This equipment generates, uses and can radiate radio frequency energy and, if not installed and used in accordance with the instructions, may cause harmful interference to radio communications. However, there is no guarantee that interference will not occur in a particular installation. If this equipment does cause harmful interference to radio or television reception, which can be determined by turning the equipment off and on, you are encouraged to try to correct the interference by one or more of the following measures: reorient or relocate the receiving antenna; increase the separation between the equipment and receiver; consult the dealer or an experienced radio/TV technician for help. • This Class B digital apparatus complies with Canadian ICES-003.

This equipment complies with FCC RF and IC RSS-102 radiation exposure limits set forth for an uncontrolled environment. This equipment should be installed and operated with a minimum distance of 20 centimeters between the radiator and your body. This transmitter must not be co-located or operating in conjunction with any other antenna or transmitter. The antennas used for this transmitter must be installed to provide a separation distance of at least 20 cm from all persons and must not be co-located or operating in conjunction with any other antenna or transmitter.

Información legal

Changes or modifications not expressly approved by Eve Systems could void your authority to operate this device.
Purpose of control: operating control; construction of control: plug-in operating control; type 1 action, operating time: continuous.

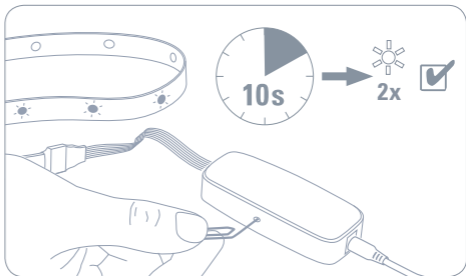
For questions about Eve product compliance with FCC regulations, please contact: Compliance Officer, Eve Systems, 100 Pine Street, Suite 1250, San Francisco CA 94111. Product: 10EAS8301 / 10EAS4101 Model: 20EAS9901 & 30EAS9901 • Part: 51EAS9902 • FCC ID: SNE-LST-001 • IC: 11192A-LST001

Por la presente, Eve Systems declara que este dispositivo cumple los requisitos básicos y otras estipulaciones de la Directiva 2014/53/EC. Para obtener una copia de la declaración de conformidad, visite www.evehome.com/doc

Frequency range: 2412 - 2472 MHz (2462 for FCC, ISSED),

Max RF e.i.r.p power < 20 dBm, Temperature range: 0 °C - 45 °C

Restablecer





Guarde el código de configuración de HomeKit a buen recaudo. Lo necesitará para añadir de forma segura Eve a su casa. Solo usted tiene una copia.

eve light strip



Habitación :

Notas :

.....